

Keynote Presentations

Wolfgang Kinzelbach

ETH Zurich, Institute of Environmental Engineering, Zurich, Switzerland

Modelling of Artificial Groundwater Recharge

Craig T. Simmons

Flinders University & National Centre for Groundwater Research and Training, Adelaide, Australia

Variable density groundwater flow: approaches, challenges and future resolutions

Emil O. Frind

Waterloo University, Waterloo, Canada

Dealing with uncertainties in groundwater protection

John Doherty

Watermark Numerical Computing, Brisbane, Australia

Environmental models - rarely right but quantifiably wrong

Fabien J. Cornaton

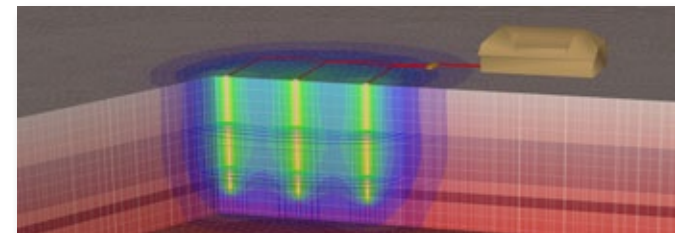
DHI-WASY, Berlin, Germany

On the use of some specific transport solutions for the calibration of flow models and the exploitation of flow solutions

Hans-Jörg G. Diersch

DHI-WASY, Berlin, Germany

Local balance accuracy in finite elements: myth and truth



Conference and Training Program

Tuesday-Friday (Aug. 28 – 31)	Thursday-Saturday (Aug. 30 – Sept. 1)	Sunday (Sept. 2)	Monday-Wednesday (Sept. 3-5)	Thursday (Sept. 6)	Friday (Sept. 7)	PEST: Model Calibration, Quantification of Predictive Uncertainty and Interfacing with FEFLOW	FEFLOW Basics	Preconference Excursion	FEFLOW User Conference	Geological Models for FEFLOW using Leapfrog Hydro	Unsaturation flow	Reactive transport modeling
											Geothermal modeling	Density-dependent simulation
Training		Conference		Training		FEFLOW 6 Standard user interface	Program- ming Inter- face IFM					

Organizer

DHI-WASY GmbH

Waltersdorfer Str. 105, 12526 Berlin, Germany

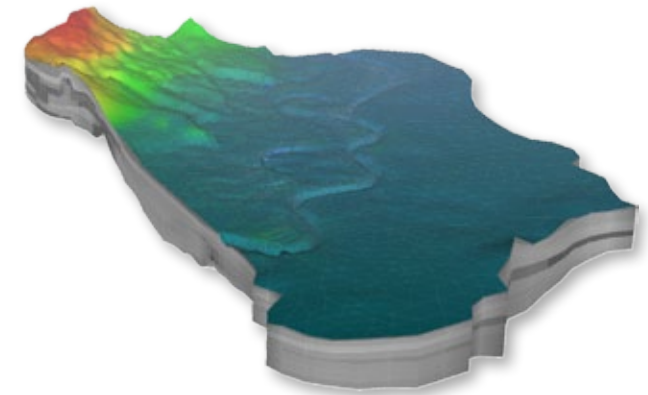
Phone: +49 (0)30 67 99 98-0

Fax: +49 (0)30 67 99 98-99

feflow2012@dhi-wasy.de | www.feflow.com



3rd International FEFLOW® User Conference



September 3-7, 2012

Berlin, Germany



Second Circular

Call for Papers

Share your experience!

Abstracts may be submitted to the Organizing Committee until **February 14, 2012**. Please email your abstract (up to 300 words) in MS Word format to feflow2012@dhi-wasy.de, including information about author(s), organization(s), email address(es) and whether oral or poster presentation is preferred.

DHI-WASY will award free FEFLOW licenses for the best oral and poster presentations.

Conference Topics

Groundwater management

regional flow, water allocation, well-head protection

Mine-water management

dewatering, flooding, tailings dams, re-injection, solution mining

Contaminant transport

remediation, risk assessment, multispecies simulation, chemical reactions

Geothermics

open-loop systems, closed-loop systems, ATEs, deep geothermics, geothermal use of mine voids

Porous-media modeling

unsaturated flow, industrial material development, new fields of application

Density-dependent flow

saltwater intrusion, brine injection, upconing

Methods and technology

user interfaces, 3D graphics, FEM, solvers, parallel computing, technical optimization, calibration and parameter estimation, uncertainty analysis

Model coupling

development, application, calibration/validation, linking with MIKE software

Registration and Fees

For registration follow the instructions on:

www.feflow.com/feflow2012

Conference fees

	with SMA	without SMA	after June 30
Three days conference	350 €	450 €	+ 150 €
Preconference excursion	25 €		

Training

	with SMA	without SMA	after June 30
PEST	1200 €	1200 €	+ 150 €
FEFLOW Basics	700 €	900 €	+ 100 €
Workshops per day	150 €	200 €	+ 50 €

All conference and training fees are net prices subject to 19% VAT.

Register before **June 30, 2012** to get the Early-Bird Discount!



Location

Older than Berlin itself and located between the arms of the rivers Dahme and Spree, Köpenick has kept its small-town touch. At the same time the bustling Berlin city center is within easy reach via public transport.

Our conference venue, the Penta-Hotel Berlin-Köpenick, is situated directly at the banks of the river Dahme, with a view of the old town and Köpenick castle. Accommodation is available at the venue itself, at the Best Western hotel right next door, or at any of the small hotels and guesthouses in the old town.

The branching network of rivers, lakes and channels in and around Köpenick provides a perfect set for our dinner boat trip which will include a crossing of the Müggelsee – a lake that many of you may remember as the southern boundary condition of the FEFLOW Demonstration Exercise model.



pentahotel Berlin-Köpenick

Grünauer Straße 1
12557 Berlin

Phone: +49 (0)30 654 790

Fax: +49 (0)30 654 795 55

info.koepenick@pentahotels.com

